



The Aricela model by CountryWide Homes features high-end, European-inspired designs like this light-filled family room with soaring ceilings.

LEFT: An elegant dining room complete with gas fireplace, coffered ceiling and access to a wet bar, is a fabulous entertaining space.

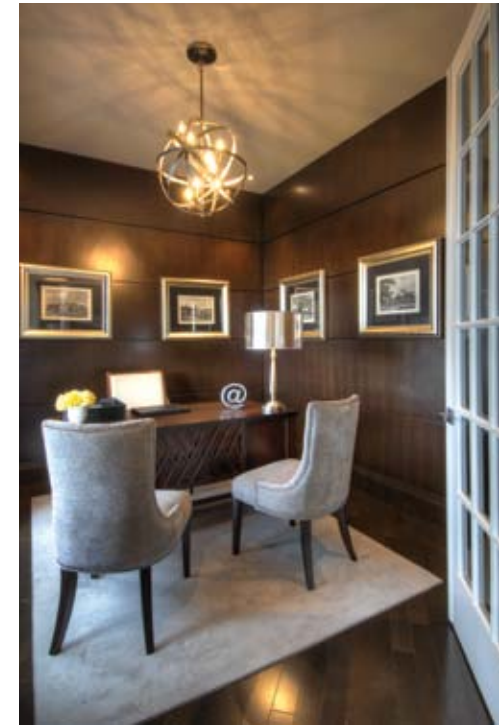
Beauty IN THE DETAILS

BY ANDREA TABONE // PHOTOGRAPHY BY SANDY MACKAY

Those who appreciate the finer things in life often find themselves obsessing over the smallest detail or fussing over the finishing touch. CountryWide Homes speaks to those seeking out perfection and will have detail-oriented souls calling their latest project in King Country Estates, home. *Continued on page 33*



This contemporary kitchen is both bright and welcoming with a granite-topped island that also serves as a breakfast bar.



This new, up-and-coming area in Nobleton is located on Highway 27 north of King Road and features the best in home design.

“We build homes with character and quality details,” says Mary Marrello, Director of Marketing and Sales for **CountryWide Homes**. “We try to do things a little different.”

And different is exactly what a homebuyer will get. A walk through the beautiful Aricela model, which features high-end European-inspired designs, is ample proof.

“Our homes are influenced by Italian and French-country style. The interior finishes are architecturally different and buyers get more out of their standard features, which is exactly what discerning buyers are looking for,” says Marrello.

CountryWide Homes’ elaborate style can’t be missed. Wrought-iron railings line the stone and brick exterior (**Trican Masonry**) offering great curb appeal. Exterior columns frame the front door from **Decora Window and Door Systems**, adding emphasis to the grand entrance. Columns are also used inside the house, creating a luxurious foyer that features imported Italian marble tiles.

This ornate feeling continues with 10-foot ceilings on the main level, nine-foot ceilings on the second level and eight-foot interior doors from **Tamarack Lumber**, which also supplied the panelling, trim work, crown moulding and millwork.

Off the foyer is a library with rich mahogany wood panelling. “A library should be a private and personal space that feels cosy and intimate,” says Marrello. “This type of wood panelling is warm and lends itself well to that.”

A unique and open concept gathering room ideal for entertaining is at the centre of the home. The room is adjacent to an oak staircase and has a cathedral ceiling and windows (Decora) guiding the eye up to the second floor. Double doors, also from Decora, lead out to one of the many porches that surround the home. *Continued on page 34*

An open entertaining space with cathedral ceilings and wall-to-floor windows is a great room for guests to gather.

ABOVE LEFT: This cosy morning room off the kitchen is a lovely spot for casual dining and shares a double-sided gas fireplace with the family room.

ABOVE CENTRE: One of many unique features in this home is the elevator by Cambridge Elevating, which is great if you’re looking for a home to retire in.

ABOVE RIGHT: Rich mahogany wood panelling warms this office space and would be a great room for a library.





A bright, spacious master suite has everything you could ask for in a personal space - even a Juliet balcony that overlooks the family room.

Following the gathering room is a trendy and spacious kitchen. A granite island from **Advanced Marble & Granite** (AMG) acts as the focal point in the room. Crisp white cabinets from **Villa Kitchen Centres** extend up to the ceiling and meet with matching crown mouldings. A wet bar is attached to the kitchen and leads to a formal dining area while a cosy breakfast room at the back of the home can be used as a casual dining space.

"The morning room has access to a covered porch and is flooded with windows," describes Marrello. "It's perfect for watching the sunrise as you sip your morning cup of java."

Stylish gas fireplaces (**National Home Comfort**) throughout the home help to keep these large, open spaces warm and cosy during the cool winter months and are an attractive feature when entertaining guests through the holidays.

Coffered ceilings and seven-inch baseboards add a majestic touch to the home as well. The neighbouring Abbot model features embellished millwork throughout the main level. "Millwork is a beautiful treatment that helps soften the archway," she explains. "It's painted the same colour as the wall and adds more interest to the home."

Natural pre-finished oak floors were used throughout the entire model home. The hardwood in the family room features an artisan style inlay designed by **Weston Flooring**. This room has a light and airy ambiance with a soaring ceiling and lots of natural light. A Juliet balcony with metal spindles overlooks the family room from the master bedroom - a great feature for parents keeping an eye on their kids.

The en suite in the master bedroom is loaded with stylistic features. For functionality, separate his-and-her vanities are set on a white marble floor, creating a polished look. It also boasts a spa-style shower fully equipped with body jets. "Our expert designers can help purchasers mimic these high-end looks by using standard products with similar qualities," says Marrello. "It's all available in our 6,000 sq. ft. design studio."

The design experts at CountryWide Homes won't leave any need or want unsatisfied. Those looking for all the bells and whistles, as well as a fully functioning family home, can find it with this builder, offering a wine cellar, elevator (**Cambridge Elevating**) and in-home gym as additional upgrades. "The wine-cellar can also be used as a wine tasting room so homeowners can entertain company and really show off their collection in style," gushes Marrello.

Continued on page 36



ELECTRICAL SYSTEMS INC.

PROVIDING ELECTRICAL CONTRACTING SERVICES IN
• RESIDENTIAL • COMMERCIAL • INDUSTRIAL & SYSTEM INTEGRATION



LIGHTING SOLUTIONS

Solutions to meet all indoor and outdoor lighting requirements. Indoor /outdoor Pot lights - Installation from \$79.00 - 100% NO DAMAGE. We also offer a wide variety of LED lighting solutions.



SAFETY, SECURITY & HOME AUTOMATION

State of the art solutions providing safety, energy management, and home entertainment control



Authorized Dealer of:
COUNTERFORCE
A UTC Fire & Security Company

Gemini is an Authorized Counterforce Dealer. Provide your family with peace of mind. Monitoring with Counterforce for \$20.00/month. No long term commitment...call us for more information.



HOME THEATRE SOLUTIONS

Enjoy a cinematic experience in your home with products offering leading-edge technologies.



SOUND SOLUTIONS

State of the art speaker lines to satisfy a wide range of acoustic applications.



INFRARED HEATERS

• instant clean, healthy heat
• energy efficient and eco friendly



COME IN AND VISIT OUR SHOWROOM!

8551 Weston Road, Unit #10, Woodbridge, Ontario

www.geminigroupinc.com

905-850-8939 | 1-877-722-8939
salesandmarketing@geminigroupinc.com



This calm, relaxing master en suite features his-and-her vanities, a large soaker tub, spa-style shower and gorgeous marble flooring.

RIGHT: One of four lovely bedrooms on the upper level.



CountryWide Homes offers the latest contemporary floor plans ranging from 3,100 sq. ft. to over 6,700 sq. ft. and are priced as low as \$769,990. "Only the latest designs and finishes are incorporated into these homes," she says. "And they conform with EnergyStar standards."

State of the art technology is what really makes this 4,634 sq. ft. Aricela model ultra chic. Each room can be set to a different temperature and audio can be heard from speakers strategically placed throughout the house.

The builder didn't waste an inch of space and even included built-in niches on the first and second floors. Here they are used to give the

upstairs hallway a dramatic look with bold yellow flowers.

This unique and ideal development not only offers lavish living spaces, but also a spectacular backdrop with rolling hills, equestrian farms, pine forests and golf courses.

A large range of lot sizes are available at King Country Estates with several bordered by the Humber River and the Oak Ridges Moraine. A quick 20-minute commute to Toronto allows residents to enjoy all the luxuries of an urban lifestyle while living in a haven surrounded by nature. **OH**



A home gym is featured on the lower level of a neighbouring model; alongside a family/games room, bar area and wine cellar.

Need Money?

Ask Pat!

In The Doghouse Over Finances?
Buying or Building Your Dream Castle?

Mortgages Arranged For:
PURCHASES | DEBT CONSOLIDATION
CONSTRUCTION | CREDIT REPAIR

LENDER DIRECT
CAPITAL CORPORATION
162 Cumberland Street, Suite 300
Toronto, Ontario M5R 3N6

Pat Lalonde AM9003368
Toll Free 1-888-587-5645
needmoney@sympatico.ca

Come to **Collingwood** & see all that we have to offer!

Four-season year round living, Vacation Chalets at the base of Blue Mountain, Waterfront retreats in Wasaga Beach & Collingwood, Beautiful Cottages in Beaver Valley and more.

All this within an hour-and-a-half of Vaughan.

Beautifully designed at base of exclusive Alpine Ski Club
\$1,295,000

Best Value across from Georgian Bay & Northwinds Beach
\$120,000

Open Concept Living near Craigeleith Ski Club
\$464,900

Custom Designed & Built in Luxurious Wasaga Sands Estates
\$599,900

Priced to Sell! Minutes to Blue Mtn. 3,300 sq ft in the centre of Collingwood
\$399,999

Sara White
Sales Representative
ThePropertyMom.com
p: 1-800-610-4868
c: 705.828.6202
e: sarawhite@rogers.com

Coldwell Banker
Trinity Realty Inc., Brokerage
Each office is independently owned and operated

Let me take care of your family, the way I take care of mine.