

The front door opens to rich colours and textures, setting the tone for the house. The family dog finds comfort on one of her favourite lounge chairs. **OPPOSITE:** The front entranceway is flanked with gardens and surrounded by greenery.

FIT FOR *king*

BY MICHELLE SINGERMAN // PHOTOGRAPHY BY SANDY MACKAY

Travelling down the winding roads of Kingscross Estates, the lush landscape engulfs you in this enchanting King City neighbourhood. *Continued on page 22*

feature

Arriving at Ellen and Peter McCarthy's open-concept, two-storey home, it's easy to forget you're just north of a big city.

Set on a two-acre property lined with ornate flowerpots in the front courtyard and apple trees in the back, it's easy to see why this couple chose to call this place home.

"I found everybody in the building department in King, whether permits or electrical, just so kind, just so helpful," Peter says. "And it just makes it so easy; I wouldn't think of building anywhere else."

A former business executive, Peter began rebuilding this home as a side project. Falling in love with the lot a few years ago, he purchased it, planning to sell once the home was completed.

He chose to renovate instead of doing a complete teardown because the original shape suited the property. Taking the house down to the foundation, Peter only kept the garage wall. "It was a concrete block wall and I could rebuild," he says. "I could use the wall to separate the garage, so it was the only good part of the whole structure."

From start to finish, the project took 10 months to complete. Calling it a "labour of love," Peter says every day on the site was a good one.

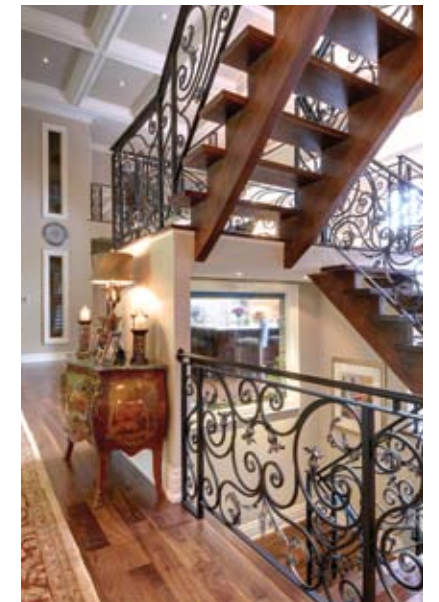
The home is a traditional design, filled with warm tones, wood and

natural elements, such as pebble flooring in the showers by **Canaroma Bath & Tile**, which also supplied the sinks and faucets. The fine mouldings were crafted by **Canamould Extrusions** with interior trim and doors by **Ganiva Trim Carpentry Ltd.**

As the project progressed, the nouveau builder knew he wanted to move in. "I fell in love with the house," he admits, even though they had just finished landscaping their other home at the time. It took some convincing, but Peter knew Ellen could love the house as he did, and he was right.

The couple did much of the work themselves. "You were the designer, the architect, the engineer," Ellen says to her husband, who wore many hats during the process. Ellen's family owns **DuRock**, a stucco manufacturer, so she knew a thing or two about building and design. "Ellen was the one who chose all the colours," says Peter. And their son-in-law, owner of **Dessano Stucco Systems**, finished the outside of the home.

Inside the home, Ellen focused on the kitchen. She loves to cook big Italian meals so this was an important room for her. Along with colour scheme, she chose the style, keeping with the traditional theme of the home. *Continued on page 24*



FAR LEFT: The dining area opens to much of the home and the table extends to seat up to 26 people for dinner. **LEFT:** Ellen and Peter McCarthy prepare lunch for outside on the deck. **TOP:** The kitchen is the hub of the home with lovely cream cabinetry and a detailed range hood by Parsiena Design. **ABOVE:** The staircase landing features a built-in waterfall that looks through to the kitchen and down the main hallway.



LEFT: The living room offers big, comfortable seating with a view to the back patio and beyond. **BELOW LEFT:** As you go up and down the home's elevator, a long piece of snake skin reveals itself through glass between floors - a favourite personal touch of Peter's. **BELOW RIGHT:** The back patio is accessed through the living room and provides a magnificent view of the two-acre property.



A granite island by **Advance Marble + Granite** spans 11-by-seven feet, defining the kitchen in the open-concept home, which boasts 24-foot ceilings in the common areas. Beautiful cream cabinetry (by **Kitchens by Ursini**) is complemented by a detailed range hood (**Parsiena Design**) and high-end built-in appliances.

A six-burner KitchenAid gas stove provides lots of cooking space and features a pot-filler along the backsplash, which is great when making dinner for 26 – the number of guests their dining room table seats. For hosts as gracious as the McCarthys, space to entertain is a must and this layout works perfectly.

The backyard is built for fun too. Leading from the family room and kitchen out to the deck, are three large double doors by **Entryguard Doors**. The deck is surrounded by starphire glass, is laid with stamped

concrete and overlooks the pool, a shared court for basketball, ball hockey and tennis, and acres of green space.

“Starphire glass was originally designed for aquariums, because regular glass has iron in it, so you don’t get a true colour when you look through,” explains Peter. He installed this custom glass almost everywhere in the house, including showers and even in the waterfall feature in the staircase.

An elevator by **Cambridge Elevating** leads from the top floor to the basement, not far from the pool walkout, which is partially covered to offer a shady spot on scalding hot days.

For indoor entertainment, there is a two-tier movie theatre, along with a workout room. Peter and his son scuba dive, so he built a room solely to store gear, which has an old ship’s porthole as an added touch. *Continued on page 26*

Save \$4 on your next order.

Offer valid on select products. Cannot be combined with any other offers. Offer code must be used when placing the order. Offer expires 10/31/2011. Code CH492022.

Fruit Experts Since 1999 **Edible ARRANGEMENTS** EdibleArrangements.com

A holiday centerpiece that draws a crowd.
3255 Rutherford Road Building H
Vaughan, ON, L4K 5Y5
905-738-4100

Harvest Festival® ©2011 Edible Arrangements, LLC. All rights reserved. Available in a variety of sizes. Containers may vary. Franchises available call 1-888-727-4258 or visit ediblearr.com

JENNIFER'S
Flowers & Gifts

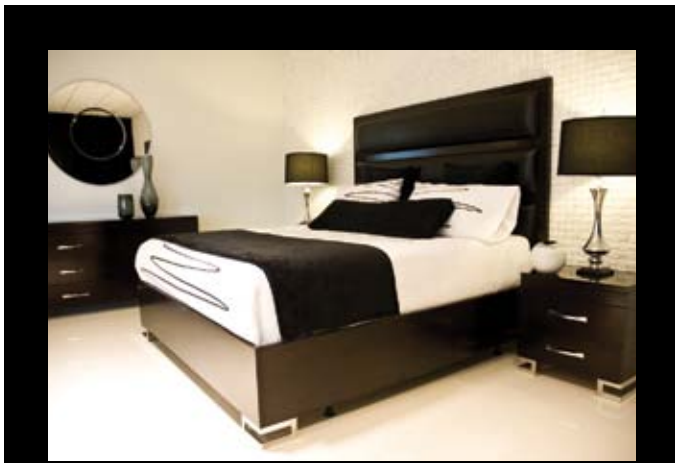
Flowers for all occasions
Local and worldwide delivery

- Fresh and Silk Arrangements
- Wedding Specialist
- Funeral Specialist
- Gourmet, gift, baby & fruit baskets
- Ceramics & plants

We carry an extensive array of home décor!

Open 7 days a week
905.417.9866
design@jennifersflowers.ca
2943 Major Mackenzie Drive, Unit #5
Maple, ON L4A 3N9

Shop online: jennifersflowers.ca



CLASSIC & CONTEMPORARY
FRINI
FURNITURE

4600 Steeles Ave West
905.851.8844
frinifurniture.ca

feature



ABOVE LEFT: A double-sink bathroom with contemporary shower (Canaroma Bath & Tile) connects two guest bedrooms on the upper level. **ABOVE RIGHT:** The grand staircase becomes a 46-foot-long unsupported bridge that offers a bird's eye view of the main living space. **FAR LEFT:** The main-floor master bedroom has its own private deck for enjoying morning cappuccino. **LEFT:** A piano window in the master en suite lets in natural light while still providing privacy.


Because the home is on well water, Peter wanted to ensure the safety of his family. "I was really concerned about quality of drinking water," he says. "So I have one room, it's strictly for water treatment." It desalinates, de-irons and does reverse osmosis and ultraviolet treatment.

The second floor of the house is split, connected by a 46-foot-long unsupported bridge with gorgeous railings by **UruCan Ornamental Art**. At one end is their son Steven's bedroom, filled with wonderful angled ceilings and hand-scraped, six-inch black walnut floors, which run along the entire upper level. The guest rooms are at the other end of the floor. The master bedroom is on the main floor, with a private balcony


and transoms as not to divide the view through windows by **Vinylbilt**.

Lights inside the home are on motion detectors, so will turn on automatically, day or night. The eye-catching fixtures found in nearly every room are by **Prima Lighting** and heating and cooling systems are by **Keystone Mechanical Group**.

Having just moved in less than a year ago, the McCarthys are working on finishing touches, and Peter is building a new, modern-style home to sell just down the street! "The people are so friendly," he says. "You cannot drive down the road without people waving to you - it's like the country. And there's conservation everywhere. It's wonderful." **OH**



RBC Royal Bank®



Mary Grace Tatangelo
Mobile Mortgage Specialist
416-912-1261
marygrace.tatangelo@rbc.com


Switch your mortgage to RBC® Royal Bank and save. It's easy and I can show you how.

Switch today!
We'll pay your switch-out fees!

Advice you can bank on™

All personal lending products and residential mortgages are offered by Royal Bank of Canada and are subject to its standard lending criteria. *Offer may be withdrawn, extended or changed at any time, without notice. Not available in combination with any other rate discounts, offers or promotions. Applicable to residential mortgages only. RBC will pay up to a maximum \$300 switch out fee charged by your current financial institution. RBC will not pay any prepayment charge levied by your current financial institution. Minimum \$100,000 mortgage (\$75,000 in Saskatchewan, Manitoba and Atlantic Provinces) to qualify for this offer. Other conditions apply. ® Registered trademarks of Royal Bank of Canada. RBC and Royal Bank are registered trademarks of Royal Bank of Canada. ™ Trademark of Royal Bank of Canada. 45808 (07/2011)

Celebrate in style.



Silhouette® window shades

Manufacturer's **Rebate** Limited Time Offer!

Celebrate the Season

Visit this participating Hunter Douglas dealer from Sept. 1st to Dec. 16th, 2011 to find out how you can receive a Manufacturer's Rebate on select Hunter Douglas products.

HunterDouglas
EXTRAORDINARY WINDOW FASHIONS

Drapery • Blinds • Shades • Shutters • Upholstery • Bedding

A Select Interiors
4370 Steeles Ave. W. #21, Woodbridge
416.230.4628 905.856.2493 www.aselectinteriors.com







CLASSIC & CONTEMPORARY

FRINI

FURNITURE

4600 Steeles Ave West
905.851.8844
frinifurniture.ca